

# Making the Clean Energy Transition Accessible for Low Income Earners



**ANITA KELMAN  
CAPSTONE COMMUNITY ACTION  
WEATHERIZATION PROGRAM  
BARRE, VT**

# Who Are Low-Income People?



- Their only commonality is having incomes below a set amount;
- Can be young, old or in-between
- Single or partnered
- Families of all sizes
- Illiterate or grad degrees
- Gun-loving right-wing
- Tree-hugging lefties



# What Do They Want?



- While some do want to save the planet(and the penguins and polar bears), ALL want to save money on their heating and electrical costs.
- Saving money seems to be a unifying factor.



# How Do We Be Inclusive?



It's important to recognize that using terminology such as “net-zero” homes, linking local efforts only to climate change issues and other such topics can make some feel as if it isn't anything that applies to them.



# Income levels

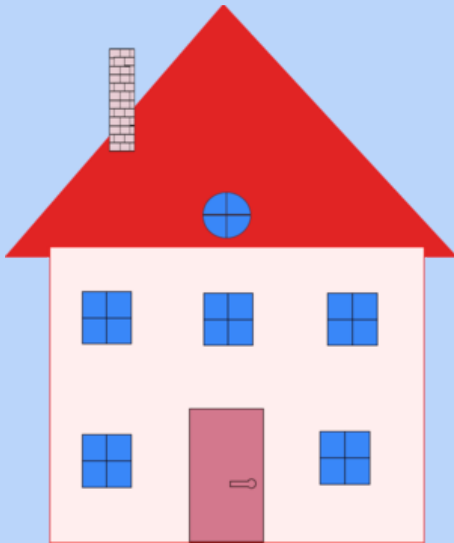


- IF YOUR YEARLY HOUSEHOLD INCOME IS LESS THAN THIS, YOU MOST LIKELY QUALIFY FOR WEATHERIZATION

• COUNTY	1-PERSON	2-PEOPLE	3-PEOPLE
• Washington	40,600	46,400	52,200
• Orange, Lamoille	39,300	44,950	50,550
• Windsor	40,500	46,300	52,100

# WHAT KINDS OF HOMES?

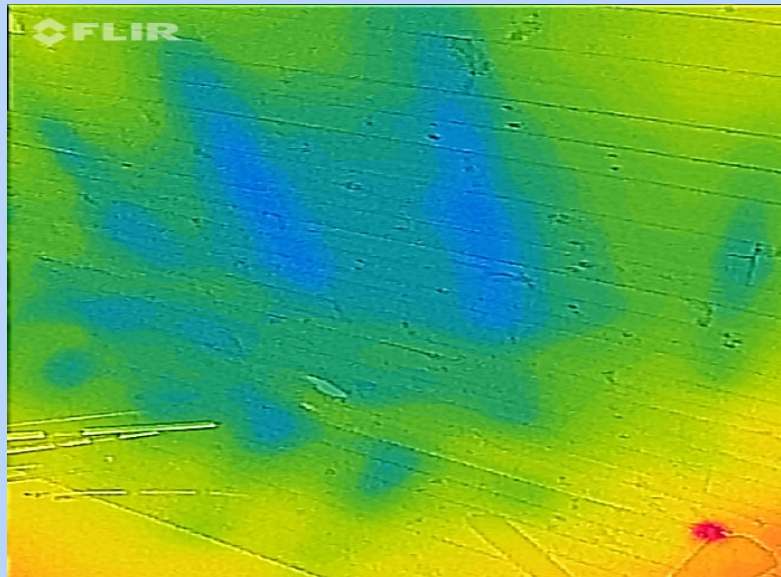
Site Built or Mobile Home, Owned or Rented



## WHAT CAN WEATHERIZATION DO FOR A HOME?



- WE TIGHTEN THE HOME BY SEALING DRAFTS
- ADD INSULATION IN ATTICS, BASEMENTS, KNEEWALLS AND OTHER PLACES IT IS NEEDED



# PREVENT ICE DAMS



- **WARM AIR LEAKING FROM THE HOME CAUSES ICE DAMS AND ICICLES. AIR SEALING FIXES THIS.**





# WHAT ELSE DO WE DO?



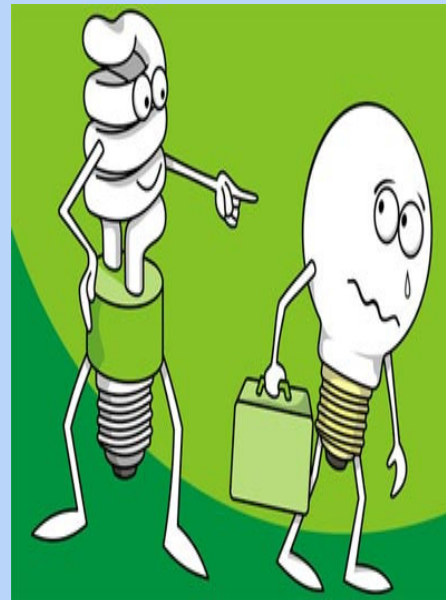
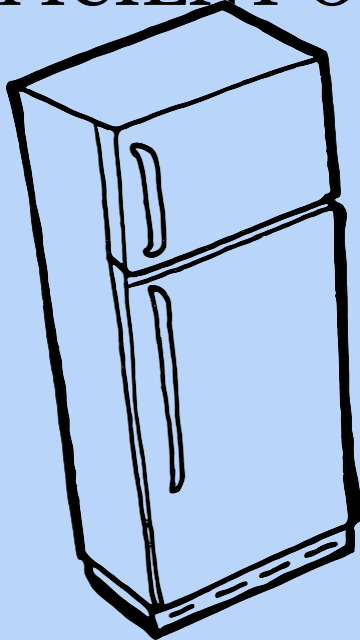
- ENSURE THAT THE HEATING SYSTEM IS WORKING WELL
- INSTALL SMOKE DETECTORS AND CO MONITORS



# WE HELP LOWER ELECTRIC BILLS



- WE LOOK AT THE ELECTRICAL DEVICES SUCH AS APPLIANCES, BULBS AND OTHER ITEMS THAT ARE USED AND REPLACE THEM WITH EFFICIENT ONES



# Electrical Measures



With EVT funding we can replace appliances, bulbs, install HPWH, ASHP, do custom measures, etc. as needed.



# HOW IS THIS HELP ACCESSED?



- For Weatherization Services contact the local Community Action Agency
- Efficiency VT services will be provided as part of Weatherization
- For those using over 10,000 kwh/year they can contact Efficiency VT for their EVT Targeted High Use program

# Success Breeds Success



- Seeing the savings add up motivates clients to take additional steps.

