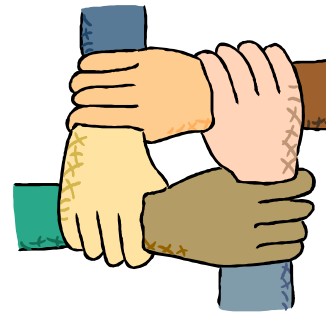


# Welcome!

## Collaborative Efforts to Improve Access to Rural Transportation



# Community Impact

- About making lasting changes in community conditions
- About **what** we want to achieve, not **who** we want to fund – ENDS (what we want for Windham County) determine MEANS (how we get there)
- Outward facing, engaged with the whole community



# How to get Focused: A Series of Decisions and Choices

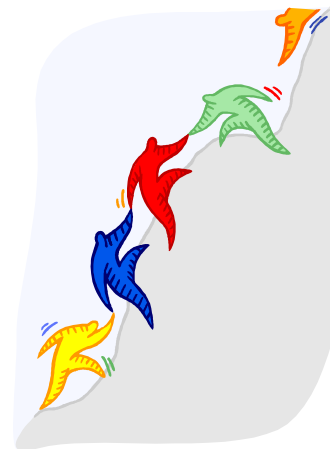


# Transportation

*HOPE for Windham County – Health, Oppportunity,  
Prosperity, Education*

One of 14 target community outcomes:

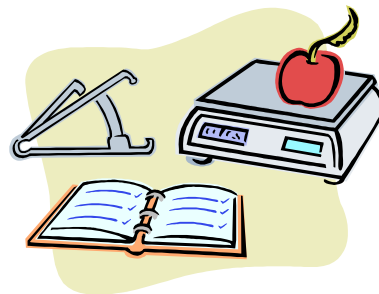
*All people in Windham County have the transportation they need to get to work and to meet their basic needs.*



# HOPE Strategies

## Hhealth

- ❖ FamilyWize Prescription Drug Discount
- ❖ Adult Dental Care Day & Denture Fund
- ❖ Support & Services at Home (SASH)



# HOPE Strategies

## Opportunity to Connect & Engage

- ❖ Vermont 2-1-1
- ❖ Benchmarks for a Better Vermont (BBVT)
- ❖ Day of Caring/Volunteer Engagement
- ❖ SEVT Irene LTRC
- ❖ United Ways of Vermont
- ❖ Get on Board Windham County



## Prosperity

- ❖ Windham Region Mobility Pilot Projects
  - ❖ Vermont 2-1-1/Go! Vermont Training for Service Providers
  - ❖ Rt. 30 Public Transportation
- ❖ Working Bridges
- ❖ Volunteer Income Tax Assistance (VITA) Program



**VERMONT**

[CONNECTINGCOMMUTERS.ORG](http://CONNECTINGCOMMUTERS.ORG)

## Education

- ❖ Fund for Quality Early Education
- ❖ WSESU Attendance Council





# Principles for Investments



*Alignment* to Target Outcomes

*Impact* as shown by each program/initiative's performance measurement (How much? How well? Is anyone better off?)

*Resources* of UWWC: in-kind, volunteers, convening power, issue expertise/data analysis, strategic grant making, advocacy/public policy

## Contact Information

Sue Graff

Community Investment Director

802.257.4011 x113

*sue@unitedwaywindham.org*

Visit our website:

*www.unitedwaywindham.org*

Sign up for our e-newsletter online

Find us on Facebook:

*United Way of Windham County*

